

ANNMARIE SCULPTURE GARDEN & ARTS CENTER



Smithsonian Affiliate

Climbing Man by Devin Mack

ANNUAL REPORT

to the Board of Calvert County Commissioners

FY'24 / JULY 1, 2023 - JUNE 30, 2024

Prepared By Ann's Circle, Inc. & Koenig Private Foundation, Inc.



"In the external scheme of things, shining moments are as brief as the twinkling of an eye, yet such twinklings are what eternity is made of -- moments when we human beings can say "I love you," "I'm proud of you," "I forgive you," "I'm grateful for you." That's what eternity is made of: invisible imperishable good stuff."

-Fred Rogers





TABLE OF CONTENTS

FY' 24 at a Glance.....	3
From Our Board Leadership	4
From Our Board Leadership	5
From The Director	6
From The Deputy Director	7

THE BASICS

About Annmarie	8
Collaborative Operations	9
Mission – Function – Goals	10
County-Owned Sculptures & Features	11
The Annmarie Campus.....	12
Every Day at Annmarie	13

OUR PEOPLE

There is Vitality	14
The Creative Team	15
FY 24 – Visitors.....	16
FY 24 – Members	17
FY 24 – Volunteers.....	18
FY 24 – Volunteer Activities	19

OUR COMMUNITY

FY 24 – Impact on the Regional Economy	20
FY 24 –Connecting with Community.....	21
FY 24 –Digital Community	22
FY 24 –Creative Partnerships	23
FY 24 –Community Partners & Support	24
FY 24 –Event Sponsors	25

SPECIAL PROJECTS

Long Range Expansion Plan	26
Special Projects	27

HORTICULTURE & GROUNDS

FY 24 – Horticulture & Grounds Team.....	28
FY 24 –County Owned Property Info	29

EVENTS & FESTIVALS

FY 24 – Major Events At-a-Glance.....	30
FY 24 – Performing Artists.....	31
FY 24 – Artsfest Highlights.....	32
FY 24 – Annmarie Garden in Lights	33
FY 24 – Market Program.....	34
FY 24 – After Hours in the Garden.....	35

EDUCATION

FY 24 – Rotating Exhibits	36
FY 24 – artLAB Creative Reuse Studio.....	37
FY 24 – Clay Studio & Family Clay Dates	38
FY 24 – Artist Residency Programs.....	39
FY 24 – Community Arts.....	40
FY 24 – Field Trips & Youth Groups.....	41
FY 24 – Nature Nook Exhibits & Programs.....	42
FY 24 – Nature Themed Events.....	43
FY 24 – Teen Initiatives	44
FY 24 – Internships.....	45

GUEST SERVICES & GIFT SHOP

Guest Services	46
Gift Shop.....	47
Housekeeping & Private Rental Team	48

FINANCIAL INFORMATION

FY 24 – Budget Report.....	49
FY 24 – Budget Breakdown.....	50
FY 24 – Grant Funds Received.....	51

IN CLOSING

What's Important to Remember	52
Thank You	53





FY '24 AT - A - GLANCE

Total Visitors:
107,032

FY 24
Combined
Budget:
\$2,145,013

- % of operating budget provided by Board of Calvert County Commissioners**14%**
- # of full time equivalent staff at Annmarie**21**
- # of native plants planted in the garden in FY24.....**6,625**
- Our newest festival just for adults.....**Rosé Soirée Wine Festival**
- Our newest property is named in honor of.....**WWII Veteran Melvin R. Gough**
- Total acreage of Annmarie Campus**52.2 acres**
- #of Annmarie member accounts**1,489**
- # of families that participated in our Family Nature Walk Program**84**
- # of Bluebird boxes in the garden.....**11**
- Who is the celebrity of our Nature Nook?.....**Frida the Axolotl**
- # of bands that performed at Artsfest '24.....**35**
- # of months it took to develop our Long Range Expansion Plan.....**18**
- Estimated layers of paint in the Mezzanine Gallery.....**204**
- # of event sponsors**59**
- # of volunteers.....**274**
- # of volunteer hours.....**6,157**
- # of visits to our Open Clay Studio program.....**322**
- # of adults who attended our Bad Art Nights**325**
- # of works of sculpture on loan from the Smithsonian Institution..... **20**



"I have loved watching the evolution of Annmarie Garden. I remember visiting before the Dennis Murray Arts Building was built, the early years of Artsfest and how enjoyable the drive through Christmas lights were. As a volunteer I have helped with After Hours, Artsfest, Fairy and Gnome Home Festival, Insectival, MLK Days, and my FAVORITE Garden In Lights. I always feel welcome and appreciated with the time I have given and volunteered.

*Truly a Magical Experience. This year the perfect sign at Garden In Lights said, 'my happy place.'
I couldn't agree more."*

L.M. "Kip" Baker, Event Volunteer

FROM OUR BOARD LEADERSHIP

Ann's Circle, Inc. - President's Comments



Lee Woodfin

When I think about what Annmarie Sculpture Garden & Arts Center means to our community, I see more than just the enriching programs and exciting events we offer. I see a passionate team enriching lives through art and nature. I see our youth volunteer programs shaping future community leaders. And I see our extraordinary Director and staff creating lasting, positive change for Southern Maryland. So, as I reflect on this final year as Board President, I'm filled with gratitude for the relationships gained, pride in what we've achieved, and great optimism for what lies ahead.

Over the past seven years, it's been an honor to support Annmarie, working in partnership with the Koenig Private Foundation and the Calvert County Board of County Commissioners to help guide its mission through meaningful progress and momentum. I've had the privilege of serving alongside a thoughtful and dedicated board, and together—with strong support from our staff, the County, and KPF—we've helped strengthen Annmarie's role as a welcoming, inclusive, and creative resource. I've seen how this place nurtures young leaders, supports working artists, connects families, and anchors Southern Maryland with purpose and possibility.

I want to thank the Calvert County Board of County Commissioners and staff for their continued partnership, and the Koenig Private Foundation for their shared vision and support. I'm also deeply grateful to my fellow board members, our Director, and our diverse staff for their tireless commitment to Annmarie's mission. And to our volunteers, members, and community partners—your consistent presence and enthusiasm help make Annmarie the vibrant, welcoming place it is today. The relationships we've built across this entire community—within the boardroom, among our staff, and throughout our public programs—have meant the world to me. They've shaped my experience as President, and I will carry them with me always.

Lee Woodfin, President, Ann's Circle, Inc. (2018-2025)



FROM OUR BOARD LEADERSHIP



Laurie Uherek

Annmarie Sculpture Garden & Arts Center is a lovely, ever-evolving, nature-inspired place to connect with art in its many forms. Years of planning and development have contributed towards beautiful landscapes, spectacular exhibits and events, and displays of world-class sculpture, all creatively arranged for the enjoyment of all ages and backgrounds.

Laurie Uherek, *President*, Koenig Private Foundation, Inc.



Annmarie Sculpture Garden & Arts Center is a true treasure to Southern Maryland and beyond—a place where creativity, connection, and nature come together to enrich lives. Our programs are meaningful, but it's the people who bring them to life—and the lives they touch—that make this place unforgettable. That spirit is what keeps Annmarie growing and inspiring, year after year. Ann's Circle remains deeply committed to supporting this mission and ensuring it continues to flourish.

Lee Woodfin, *President*, Ann's Circle, Inc.



FROM THE DIRECTOR

A powerful vision for Annmarie...

There are a lot of people who have worked behind the scenes over the years to support and nurture Annmarie Garden. One of the most notable was Mr. Duane Beckhorn, who passed away on January 22, 2025, at the age of 93. News of his death came in the midst of writing this Annual Report and lessons from his leadership and vision are foremost in my thoughts.

Mr. Beckhorn served as our board president for more than 20 years and was instrumental in developing Annmarie and guiding our vision. He was not from Southern Maryland but rather became connected to Annmarie through his role as lawyer and friend to Francis and Ann Koenig. (As you may recall, the Koenigs donated the property of Annmarie Garden to the people of Calvert County in 1991). Mr. Beckhorn used his extensive connections to further the vision of Annmarie, including establishing our affiliation with the Smithsonian Institution, working with the Corcoran Gallery of Art to organize a large loan for the inaugural exhibit in the Arts Building, and bringing Mrs. Olga Hirshhorn to Annmarie Garden in support of our sculpture program with the Hirshhorn Museum & Sculpture Garden.

Mr. Beckhorn, along with Pat Buehler and Everett Hoeg, negotiated the original operating agreement with Calvert County Government, which has led to many years of productive partnership. Mr. Beckhorn believed deeply in the vision of Mr. and Mrs. Koenig and used every resource he had to establish and nurture the dream of Annmarie Garden. As he was often heard to say, "the two best words in the English language are *mutually beneficial*." Our organization believes deeply in the importance of community partnerships that benefit us all – guests, members, artists, volunteers, vendors, business partners, sponsors, schools, county and state government, and more. You will see evidence of these connections throughout this report. We have Mr. Beckhorn to thank for showing us the way to a strong organization through mutually beneficial ties.

Mr. Beckhorn instructed me to imagine and operate Annmarie as a regional, and ultimately, national facility – to plan our activities and our future with a broad vision of service. He understood the importance of service to community, but knew we could do both - serve our community and work to place Annmarie at the national level, as a place for high quality art and programs. This vision helps root us in our local community and inspires us to grow our network across the country.



2007 Fundraising event for the Arts Building: Marianne Harms and Duane Beckhorn put on their hard hats to get a sneak peek of the building under construction.

Duane was known for his dry wit, work ethic, his intelligence, and honesty, all traits that he modelled to me and others in his role as board president. He hired me in 2003, and his love for Annmarie Garden infected me very quickly and set me on a path I could have never imagined all those years ago. As a boss, he gave me great freedom because he believed that you, "hire good people, then get out of their way," but he never hesitated to share his honest opinion, and set me back on the right path when he felt I needed it. He was direct, fair, and thoughtful, and was a fearless negotiator.

As I reflect on his legacy, I am reminded of the areas of our mission for which he felt the most passionate – adding new works to the sculpture garden, hosting high quality art exhibits, and enhancing the landscaping of the grounds. Duane would be heartened to know that our newly adopted Long Range Expansion Plan addresses these areas, and we now have a very talented Horticulture & Grounds Manager that is capable of transforming the garden. I am pleased to observe that Duane's vision is alive and well at Annmarie, and has been passed on to the next generation.

Any success I have enjoyed as a leader is due in large part to his influence. Thank you, Duane, for all you did for me and for the people of Calvert County and Southern Maryland. We will miss your leadership, wit, and wisdom, and your powerful vision for Annmarie.



2008 Grand Opening of the Arts Building (left to right): David Levy, Director of the Corcoran Gallery of Art, Olga Hirshhorn, Duane Beckhorn, Jean Beckhorn, Rosemary DeRosa (that's me behind Mrs. Hirshhorn)



Jaimie Jeffrey

Bursting at the Seams...

When I started working here almost 22 years ago, Annmarie Garden felt huge, quiet, and full of promise. The backbone was already here with the paved walking trail, the tiny 2-room office building (now the Studio School), the beginnings of the permanent and loaned sculpture collection, a mighty staff of four. And lots of trees! Artsfest was established, Halloween was charming, Garden in Lights had its humble beginnings, but we knew Annmarie Sculpture Garden and its programs had a lot of growing to do. So we got to work.

Over the years we've added the arts building, gallery shows, events, classes, field trips and educational programs, summer camps, a nature nook, a clay studio, artist residencies, internships, party rentals, markets and much more. We've developed more paths, new gardens, new partnerships, and we've collaborated with our community in ways we never imagined. Our staff has grown from 4 to 48, with countless others serving as teachers, interns, and volunteers. Suddenly, the Garden doesn't feel so huge anymore. We've run out of space, inside the office and storage areas, outside in the forest and fields, and even on the calendar. If you've taken a clay class here or parked in our event parking field, you know what I mean! We are bursting at the seams... and we are not finished yet.

This is why the new long-range expansion plan is so exciting. It brings our dreams into full view and maps out the time and space we so desperately need to make it all happen. Broken into different phases and projects, we will be able to grow into our 50+ acres in a smart and efficient way. We will be able to create more functional workspaces for staff and students, more rooms and open spaces for public use, more trails, more gardens—all which will keep us firmly rooted in our community as we continue to inspire, connect, educate, and bring joy. These are exciting times here at AMG, and we invite you to continue to grow and dream with us!

Jaimie Jeffrey, Deputy Director/Curator of Education





ANNMARIE SCULPTURE GARDEN & ARTS CENTER

is located in scenic Solomons, Maryland, where the Patuxent River meets the Chesapeake Bay. The sculpture garden features trails that meander through the woods past permanent and loaned sculpture, including over thirty works on loan from the Smithsonian Institution and the National Gallery of Art. Artists in the collection include: Antonio Tobias Mendez, Barbara Hepworth, George Rickey, Cesar, Robert Engman, Kenneth Snelson, and Francisco Zuniga.

The grounds also include the Beckhorn-Hoeg Butterfly Garden, the Fairy Lolly Natural Play Space, the Tree-mendous Trail, and the Creekside Overlook. The award-winning Murray Arts Building includes rotating exhibition space, a gift shop, the artLAB Creative Re-use Studio, and the Nature Nook. The Studio School offers classes for all ages and abilities - from pottery to dance - taught by professional artists and arts educators.

Annmurie presents a wide variety of annual festivals, exhibits, markets, and programs in a vibrant space, serving more than **107,000 guests** each year.

Annmurie Sculpture Garden & Arts Center

13470 Dowell Road
Solomons, Maryland 20688



ANNMARIE CELEBRATES OUR COMMUNITY

County-owned art in the garden is inspired by our maritime and agricultural history.

ANNMARIE MEANS BUSINESS

Our many programs and events support the regional economy.

ANNMARIE DRIVES TOURISM

We welcome more than 107,000 guests to our park every year.

COLLABORATIVE OPERATIONS



Board of County Commissioners as of June 30, 2024

Earl F. "Buddy" Hance, *President*
Todd Ireland, *Vice President*
Mark C. Cox, Sr.
Mike Hart
Catherine M. Grasso

Koenig Private Foundation, Inc. Board of Directors & Officers

Laurie Uherek, *President*
Pat Buehler
Everett Hoeg
Duane Beckhorn, *Trustee Emeritus*
Stacey Hann-Ruff, *Assistant Secretary*

Ann's Circle, Inc.

Board of Directors as of June 30, 2024

Lee Woodfin, *President*
Scott Russey, *Vice President*
Todd Capitani, *Treasurer*
Pamela Teague, *Secretary*
Francine Clark
Cari Desantis
Lisa Garner
Stacey Hann-Ruff
Tommy Higgins
Evelyn S. Hungerford
Greg Kernan
Carolyn McHugh
Eugene McHugh
Laurie Uherek
Linda Turner, *BOCC Liaison*



A SUCCESSFUL PARTNERSHIP

Calvert County Government

- Provides annual operating grant to Koenig Private Foundation
- Maintenance & utilities support

The 30-acre grounds of Annmarie Sculpture Garden, including the Murray Arts Building, the Studio School building, the Creekside Overlook, Cove Point Pavilion, and seven site-specific works of art, are owned by the Board of Calvert County Commissioners. The BOCC supports Annmarie in a variety of ways, including an annual operating grant, maintenance support, and utilities support.

The Koenig Private Foundation, Inc.

Created 2000, non-profit organization

- Holds lease & operating agreement
- Employs staff
- Contributes funds to operating budget & special projects
- Holds affiliation status with Smithsonian Institution
- Holds all sculpture loan agreements with Smithsonian Institution and National Gallery of Art
- Owns two adjacent properties (totaling 22.2 acres)

Since 2002, the Koenig Private Foundation (KPF), a non-profit, charitable organization, has held the lease and operating agreement for Annmarie Garden. KPF employs the staff and owns two adjacent properties that contribute to the functioning of Annmarie. KPF holds the loan agreements for outdoor sculpture on loan to Annmarie (including works from the Smithsonian Institution and the National Gallery of Art).

Ann's Circle, Inc.

Created 2006, non-profit organization

- Provides funds to Koenig Private Foundation in support of payroll
- Oversees education & program budget
- Seeks out grants & raises funds to support operation
- Markets events & programs
- Manages membership & volunteer program
- Manages gift shop

Ann's Circle, Inc. (ACI) was created to provide input from the community and to help ensure the sustainability of Annmarie Garden. ACI provides financial oversight of the many programs, exhibits, events, classes, markets, and activities of Annmarie in collaboration with KPF. The volunteer and membership programs, and gift shop, are also managed by Ann's Circle, Inc.

MISSION • FUNCTION • GOALS



MISSION

Annmarié is committed to connecting people to art and nature. Through a wide variety of engaging art exhibits, programs, classes, public projects, and annual events, Annmarie opens up opportunities for creativity, collaboration, and reflection. By providing opportunities for visitors to experience and engage in imaginative activities, Annmarie seeks to nurture the human spirit and contribute to a healthy society.



FUNCTION & GOALS

1. Enhance the quality of life, health and well-being of the residents and businesses of Southern Maryland.
2. Present a wide variety of educational, creative, and recreational programs for visitors of all ages – at an affordable cost.
3. Collaborate with special populations, including military families, K-12 education, special needs, senior communities, etc., to be of greatest service to Southern Maryland now and in the future.
4. Continue to refresh and re-energize events, programs and facilities to engage ever-growing numbers of guests and members.
5. Increase numbers of daily visitors, group tours and field trips by providing exceptional art & nature experiences.
6. Perpetually seek opportunities to amplify the beauty, serenity, charm and appeal of the garden.

COUNTY-OWNED SCULPTURES & FEATURES

Calvert County owns numerous works of art and key features at Annmarie Garden, each inspired by the history and culture of Calvert County, including:



A Chesapeake Waterman



The Gateway



Council Ring



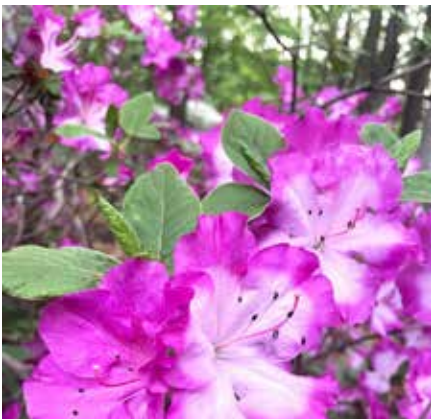
Surveyor's Map



The Talking Benches



Petroglyphs



Glenn Dale Azalea Collection



**Tree-mendous Trail &
Nature Rubbing Plaques**

WORKS ON LOAN

20 works on loan from
Smithsonian Institution

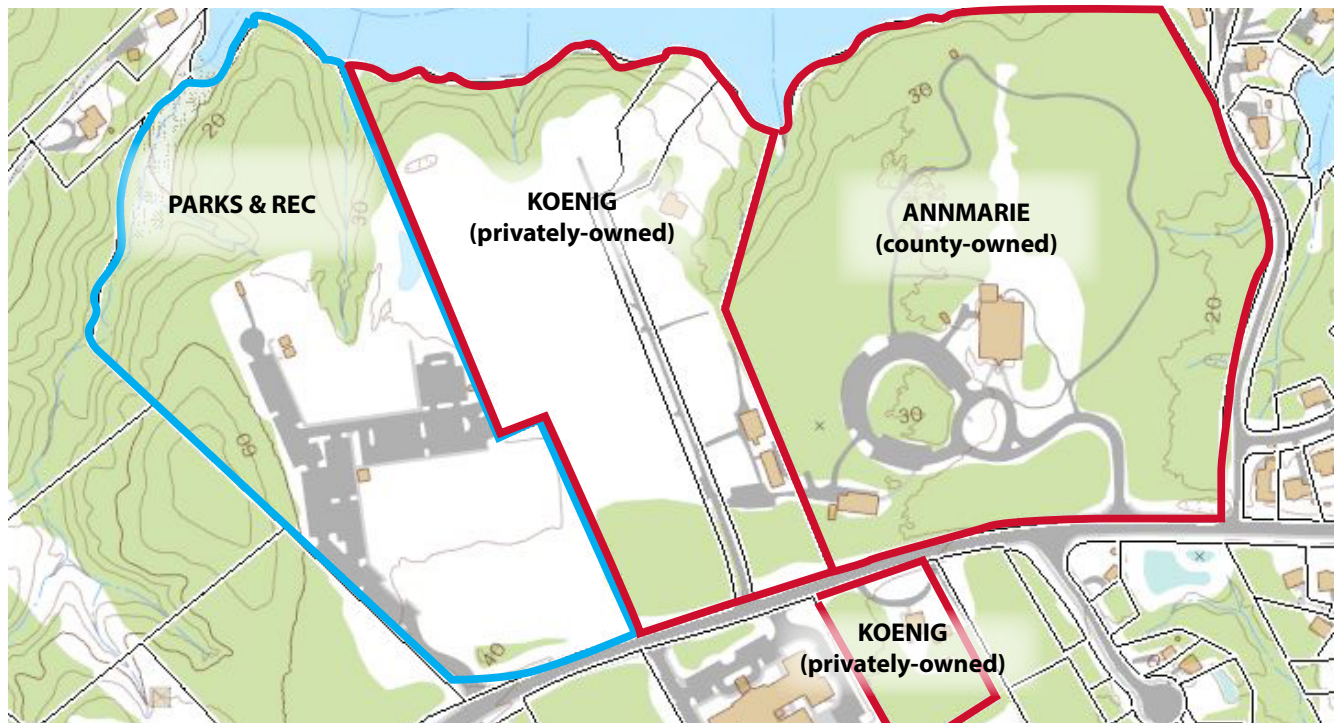
2 works on loan from
National Gallery of Art

5 works on long-term loan
from private artists

8 works on display owned by
Ann's Circle

THE ANNMARIE CAMPUS

Consists of three properties (two of which are waterfront) totaling 52.2 acres



AMENITIES

The County Property (30 acres):

- Sculpture Garden, woods, trails, and native gardens
- 7 site-specific works of art
- Glenn Dale Azalea Collection
- Murray Arts Building – Two Galleries, Nature Nook, artLAB, Gift Shop & Administrative Offices
- Studio School
- Fairy Lolly & Cove Point Pavilion
- Demas Family Discovery Garden
- Tree-mendous Trail
- Asphalt Parking Lot – about 100 parking spaces
- Creekside Overlook (closed for repairs)

The Koenig Field Property (20 acres):

- Parking Field
- Artist House
- Clay Studio & Kiln Shed
- Community Garden
- Maintenance Barn
- Caretaker's Residence
- Pier on St. John's Creek
- Gated access to Solomons Town Center Park

Grounds Manager's House (2.2 acres):

Purchased Feb 2024 by Koenig Private Foundation

COUNTY-OWNED STRUCTURES



Murray Arts Building



Creekside Overlook



Studio School Building



Cove Point Pavilion

EVERY DAY AT ANNMARIE

Open Daily - Hours vary seasonably

Our "Pay What You Can" system means we never turn anyone away for a daily visit.

We have a donation box, as well as signage linking to a digital pay method, to support our "Pay What You Can" system.

Suggested donation: \$5/person; Members free



DONATION BOX



SCULPTURE WALK



EXHIBITS



NATURE NOOK



artLAB



FAIRY LOLLY NATURAL PLAY SPACE



NATIVE GARDENS



TREE-MENDOUS TRAIL



CREEKSIDE OVERLOOK



GIFT SHOP

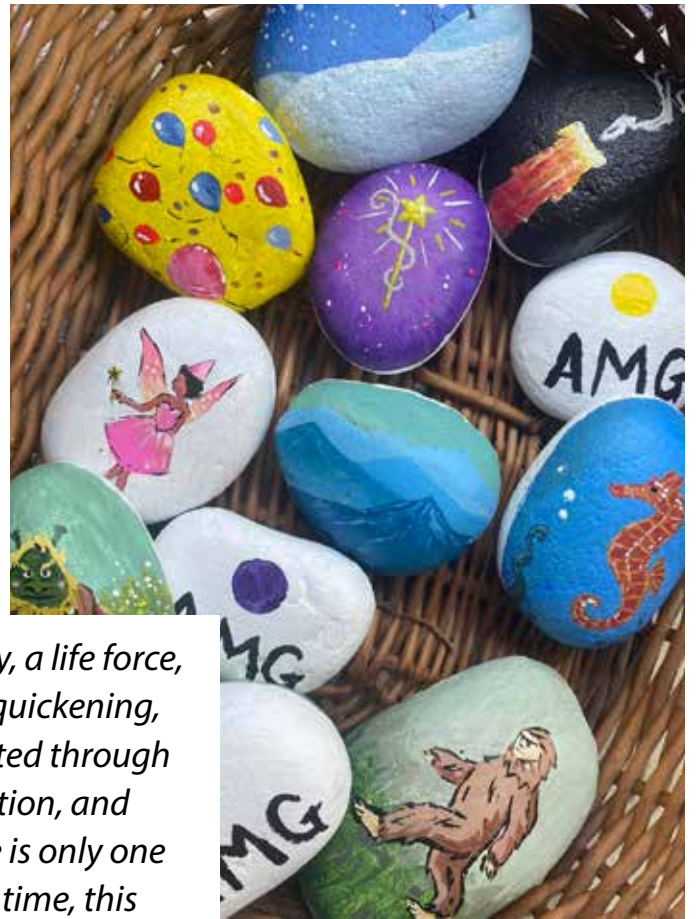


ENCHANTED SUMMER

**ENHANCED
DAILY
EXPERIENCES**
Seasonally-based
activities



HIDDEN SURPRISES



"There is vitality, a life force, an energy, a quickening, that is translated through you into action, and because there is only one of you in all time, this expression is unique.. And if you block it, it will never exist through any other medium and will be lost."

-Martha Graham



THE CREATIVE TEAM

The Koenig Private Foundation employs all Annmarie staff



Full-time	12
Part-time	21
Contract – Business Manager	1
College Interns	4
Seasonal	10



LEADERSHIP

Stacey Hann-Ruff
Director

Jaimie Jeffrey
*Deputy Director/
Curator of Education*

EDUCATION TEAM

Helen Lindsey
Education & Exhibit Specialist

Reiker Dean
Education & Exhibit Specialist

Hester Burch
Naturalist

Kreea Greaves
Education Support - Events

Christian Harris
Education Support

Kira Okshewsky
Education Support

Leigh Dolesh
Clay Studio Manager



HORTICULTURE & GROUNDS

Joe Mudd
Horticulture & Grounds Manager

Hayden White
Assistant Hort & Grounds Manager

Maya Williams
Gardener

Kate Shoup
Gardener

John Hudson
Richard Parker

Parker Nelson
Jacob Rosado-Bravo



GUEST SERVICES TEAM

Colleen Cofod
Guest Services Manager

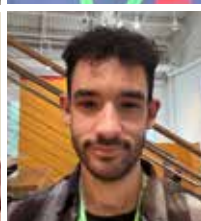
Carolyn Schindler
Weekend Supervisor

Evgeniia Iakovlena
Gift Shop Lead

Aletta Brown
Housekeeping & Rental Supervisor

Joe Gordon
Housekeeping

Alberto Rodriguez-Colon
Guest Services Support



MARKETING & DEVELOPMENT

Jane Bachman
Development Director

Jennifer Blake
Marketing Director

BUSINESS TEAM

Linda Bracey
Business Manager

Stephanie Scott
Database Manager

FY24 - VISITORS

**ANNUAL
ATTENDANCE
FY 24
107,032**

• Garden In Lights	37,436
• Regular Daily Admission	28,830
• Artsfest	9,591
• Maker's Market Program	7,750
• Halloween in the Garden	5,327
• Fairy & Gnome Home Festival	4,572
• Homeschool Co-Op	3,040
• Annmarie After Hour Events	1,752
• Insectival	1,689
• CHESPAX Field Trips	1,634
• Private Rentals	1,633
• Rosé Soirée	1,290
• Clay Classes	1,165
• Group Tours & Field Trips	688
• MLK Days	285
• Studio School Classes	230
• Nature Programs	120



FUN FACT

Annmarie Garden in Lights draws guests from across the U.S. and around the world including Italy, Japan, Canada, and the United Kingdom!



FY 24 - MEMBERS

MEMBERS

Ann's Circle Manages the Membership Program

Annmarie Garden membership accounts (as of 6/30/24) **1,489**

Membership Level Breakdown

Individual	244
Dual	10
Family	926
Family Plus	131
Family Military	140
Patron	28
Benefactor	5
Ambassador	5

FUN FACT

We have members from all over the continental United States, including Alaska, Hawaii, and Washington State.

Did You Know?

County funding provides a vital foundation for our operations—but it's just the beginning. Over 85% of our budget is raised through our many programs, events, and activities, including revenues from our membership program! Members enjoy a variety of great benefits, all while supporting overall operations. Plus, members provide another valuable resource – volunteers! Thank you, members, for all you do to keep our doors open and our programs humming along!



"For six years, our family has been a Family Plus Member at Annmarie Sculpture Garden & Arts Center and has thoroughly enjoyed all the Garden has to offer. The numerous events provide us with opportunities to visit and create lasting memories in this family-friendly setting. With such a wide range of events available, it is challenging to pinpoint a favorite. However, Garden in Lights, with its annual theme changes and the addition of the Holiday Train and Lego Village, is consistently a family favorite. The Fairy and Gnome Home Festival and Insectival events are also very enjoyable. Annmarie Garden is constantly changing, making each visit a unique and memorable experience."

~Elizabeth Harrington & Family,
Annmarie Members

FY24 - VOLUNTEERS

274
VOLUNTEERS



Our adult volunteers help:

- Greet guests & answer phones
- Work special events
- Serve on our board and committees
- Create Yarn-Bomb installations for the garden
- Take care of the Nature Nook & critters

of Adult Volunteers

233

Our Teen volunteers help:

- Assist staff & faculty with summer camps
- Work special events
- Manage the parking field during Artsfest
- Take care of Nature Nook & critters

of Teen Volunteers

41

TOTAL Volunteers

274

~ FY24 ~

TOTAL
VOLUNTEER
HOURS

6,157



"As more people have come to recognize the magic of Annmarie Garden, we who volunteer at the front desk are experiencing great rewards. While interaction with visitors is a great pleasure, I have even greater appreciation for the opportunity to interact with the very artistic and talented staff and amazing artists who are the underpinnings of Annmarie. Its atmosphere teems with expression and energy, and envelops us with appreciation for the world around us."

Jody Clark, Front Desk Volunteer

"Volunteering at Annmarie Sculpture Garden & Arts Center is more than just giving my time - it's about being part of a creative, welcoming community. Whether I'm greeting guests, helping at arts and craft festivals, or experiencing magic of Garden In Lights, I love seeing people of all ages connect with art and nature. From the whimsical Fairy & Gnome Festival, to the inspiring art exhibits, every event is a chance to share joy, creativity, and discovery."

Alison Fields, Front Desk Volunteer



FY24 - VOLUNTEER ACTIVITIES

Our wonderful volunteers stay busy year-round!



Volunteer Appreciation Events



Artsfest Volunteers



Garden in Lights

"Volunteering at Annmarie Garden has offered us the opportunity to meet wonderful people both at the Garden and from around our community. We especially enjoy helping out during "Garden in Lights" and seeing the smiles and looks of amazement on young and not-so-young faces as they enter the very colorful Christmas wonderland! Annmarie Garden is a hidden gem. Whether we're volunteering or attending an event, we're amazed at the caliber of staff and exhibits. Thank you, AMG!"

Don and Jean Layton, Event Volunteers

About Our Volunteers

The AMG volunteer team consists of people from all walks of life, who come together to extend courtesy and kindness to anyone who comes to Annmarie Sculpture Garden & Arts Center, whether it's for a day trip or one of our many events. The volunteers make running this place possible - and it takes a village! We understand that gratitude goes a long way, so we regularly host Volunteer Appreciation Events that feature activities, food and refreshments, and gifts for the volunteers and their families. We want them to leave here knowing they are appreciated, and leave here with a sense of knowing that they are contributing to something meaningful and important - connecting people with art and nature, and building a community.



Calvert County Master Gardeners

Did you know? Every year, Artsfest artists donate hand made works of art that are in turn gifted to our volunteers.



Front Desk Volunteers



Nature Nook Volunteers

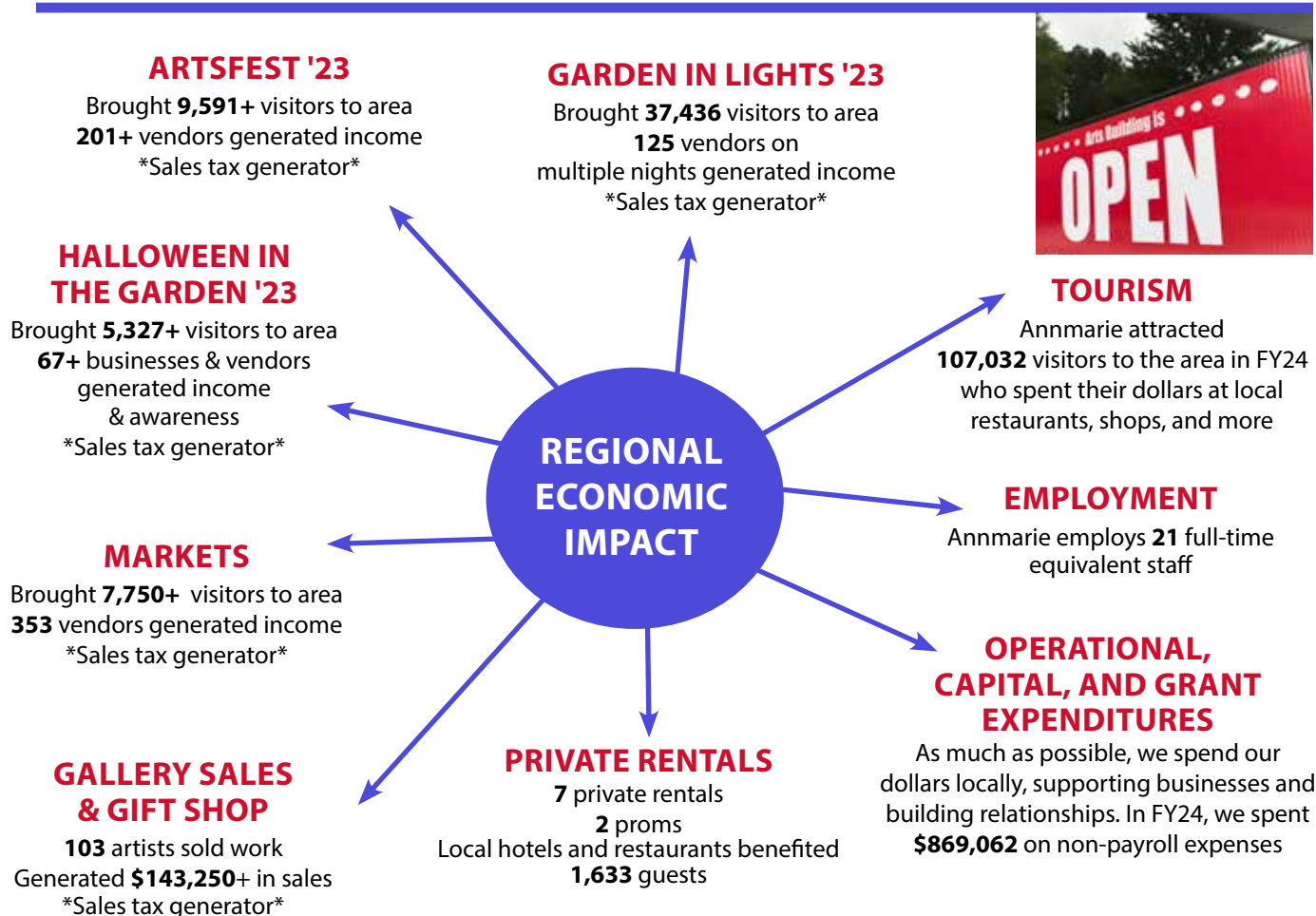


Patuxent High School ROTC



Teen Leadership Program

FY24 - OUR IMPACT ON THE REGIONAL ECONOMY



From National to Local: The Arts drives tourism and revenue to local business, By the Numbers:

4.3% of the nation's economy

Art strengthens the economy. The nation's Arts and Culture sector - nonprofit, commercial, education - is a \$1.1 trillion industry that supports 5.2 million jobs (2022). That is 4.3% of the nation's economy - a larger share of GDP than powerhouse sectors such as Transportation, Construction, Education, and Agriculture. Similar results are found at the state level. The nonprofit arts and culture industry alone generated \$151.7 billion in economic activity in 2022 - spending by arts organizations and their audiences - which supported 2.6 million jobs and generated \$29.1 billion in government revenue.

\$38.46 per person, per event

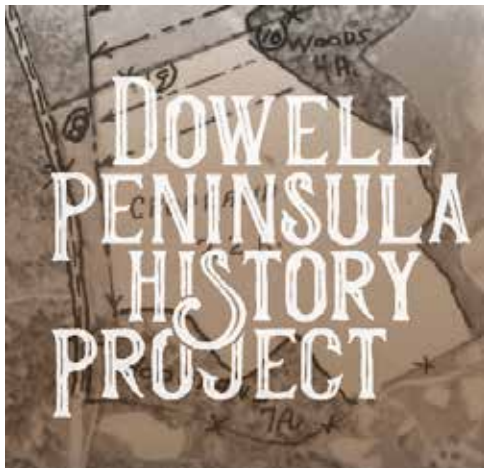
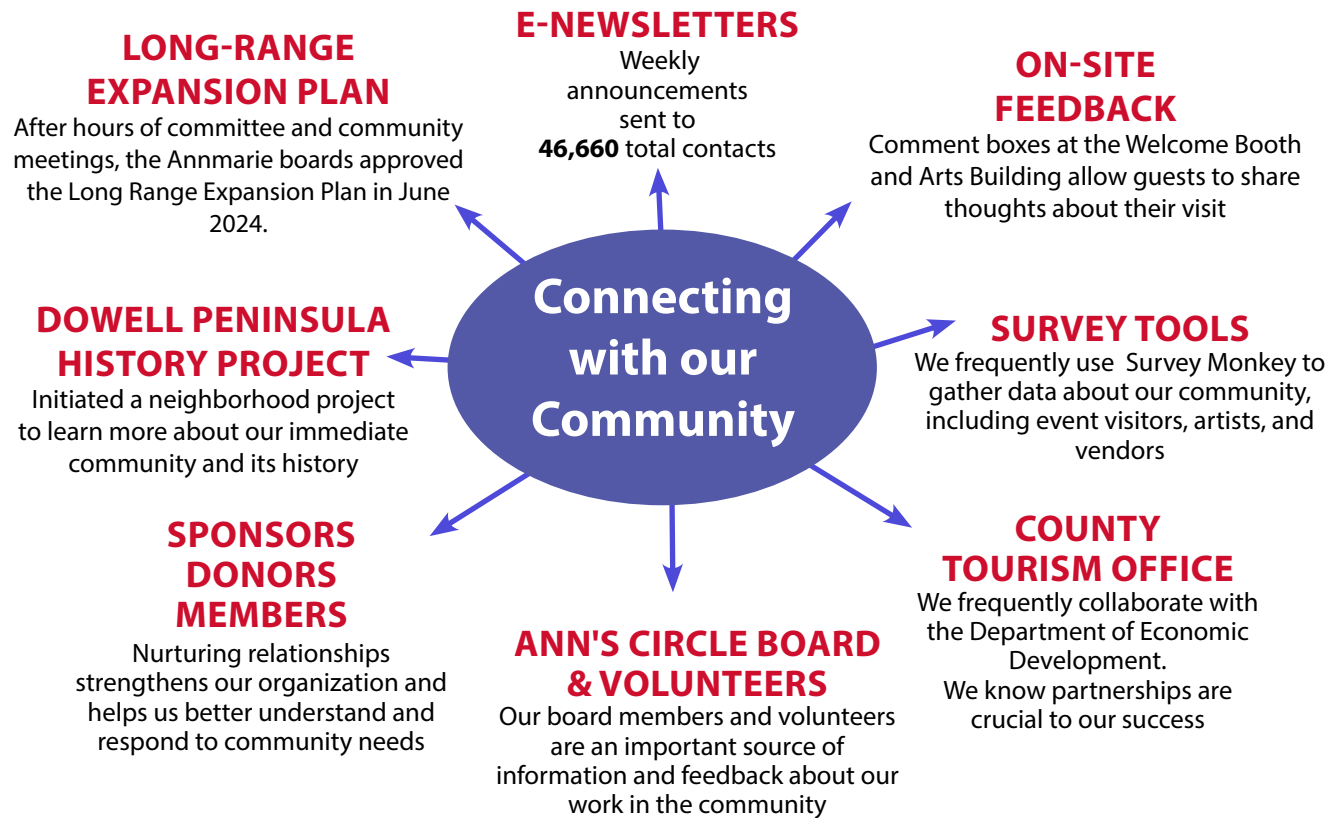
Arts drives revenue to local businesses. Arts attendees spend an average of \$38.46 per person, per event, beyond the cost of admission, on items such as meals, parking, and lodging - vital income for local businesses. 30% of attendees come from outside the county in which the arts event took place; those nonlocal attendees average \$60.57 in spending beyond admission, and 77% said they traveled to the community specifically to attend that arts and culture event.

Top 4 treatments for health and well-being of our military

Arts for the health and well-being of our military. The arts can heal the mental, physical, and moral injuries of war for military servicemembers and veterans - who rank the creative arts therapies in the top four (out of 40) interventions and treatments.

Source: *10 Reasons to Support the Arts in 2024, Americans for the Arts*

FY24 - CONNECTING WITH OUR COMMUNITY



Jennifer Blake

Jennifer Blake, Marketing Director

Every time I talk about my role at Annmarie, I can't help but feel a deep sense of pride and passion. Marketing for such an extraordinary place comes so naturally to me, because I wholeheartedly believe in our mission. As a lifelong artist, former aspiring history professor, and impassioned writer, my role as Marketing Director is the perfect fusion of all the things I love most.

Reaching potential visitors through creative social media strategies is both a challenge and a thrill—one that I embrace wholeheartedly. Annmarie's story is important; we are a vitally important cultural and artistic hub in Southern Maryland, and communicating that to everyone through media is so rewarding.

Beyond continuing to serve our incredible local community, my vision for Annmarie is to deepen our connections with artists, expand our reach on a national scale, and increase our visibility in meaningful and impactful ways on other platforms, like LinkedIn. I'm energized by the idea of growing our online community and creating ways for people to engage with Annmarie.

FY24 - DIGITAL COMMUNITY

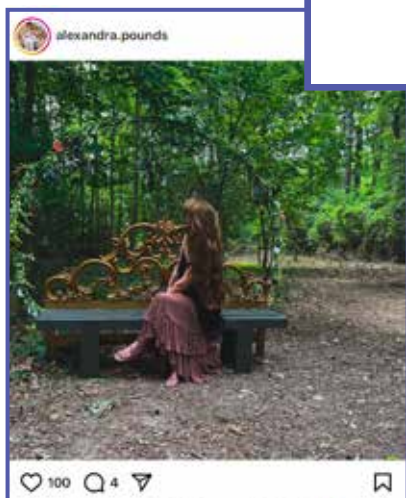
Annmarie Sculpture Garden & Arts Center continues to grow its vibrant and diverse online communities. Our multi-platform social media accounts provide a space to engage directly with our followers by advertising current and future exhibits, sharing meaningful content, and answering questions. Annmarie's followers consist of artists, vendors, event attendees, parents, performers, sponsors, and more.

SOCIAL MEDIA

Facebook • Instagram • LinkedIn • TikTok • X

@annmariearts

Over **29,000 Followers**
(12.4% increase from last year)



Visitors and exhibiting artists continue to tag us in posts, but many have started using the "collab" feature on Instagram. Approving these collaborative posts, especially in the case of an influencer or an artist with an active following, is extremely beneficial for growing our AMG online community and audience, increasing the post reach for all tagged pages.

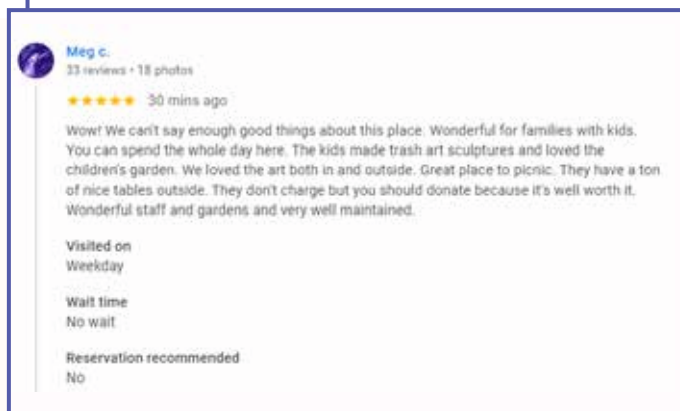
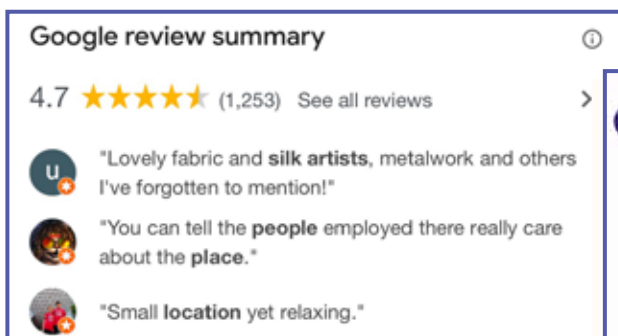


In addition to trending social media platforms, we also actively monitor Google, Trip Advisor, and Yelp. We're always excited to see users share their experiences and photos with the rest of the world. This is another way we can communicate with the public, addressing concerns, comments, and inquiries when necessary.

ONLINE REVIEWS

Google Reviews: 4.7 Star Rating / 1,253 Reviews (6.1% Increase from last year)

Trip Advisor: 4.5 Star Rating / 213 Reviews



FY24 CREATIVE PROGRAMMING & PARTNERSHIPS

We love our Southern Maryland community! We open our indoor and outdoor spaces to local businesses and organizations, combining our programming to reach as many people as possible. From literacy fun with Calvert Library, Chespax field trips with Calvert County Public Schools, vegetable gardening with the Calvert County Master Gardeners in support of local food banks, and Homeschool Day with Calvert Marine Museum, our community partners help keep Annmarie humming with educational, therapeutic, and creative energy all year long! We are thankful to be part of such a close-knit and supportive community.



CHESPAX FIELD TRIPS
with every 2nd grader in Calvert County



LITERACY PROGRAMS
with Calvert Library



CALVERT BIRDING TRAIL
with Calvert County Parks

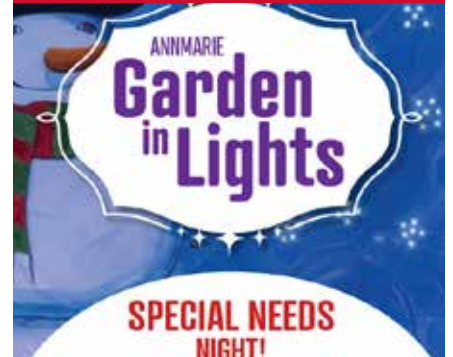
HOMESCHOOL DAY
with Calvert Marine Museum
202 people



COMMUNITY GARDEN
with Calvert County Master Gardeners



SPECIAL NEEDS NIGHT
with Calvert County Parks & Rec
Therapeutic Services



"For more than ten years, the master gardeners have partnered with Annmarie to manage a demonstration garden that educates the public and supports our local food pantries. As an educational resource – and an opportunity to engage with the public – we are pleased to provide our support to this community treasure."

James McVey
Calvert County Master Gardener

RECOVERY FEST
hosted by the Calvert County
Health Department



CALVERT BARN QUILT TRAIL
with the Arts Council of Calvert
County



DID YOU KNOW? Over 800 pounds of produce was harvested in our Community Garden!

FY24 - COMMUNITY PARTNERS & SUPPORTERS

- COMMUNITY PARTNERS -

"We get by with a little help from our friends"

Paul McCartney / John Lennon

At Annmarie Garden we are reminded daily of the spirit of community, the power of collaboration, and the joy of friendship. And we are very grateful to live and work in a community that epitomizes all of the above. Here is a sampling of what that friendship looks like:

☀ Generous support from our State agencies is critical for non-profits. We are grateful to the following organizations for the work they do to support our programs: Maryland State Arts Council; Maryland Historical Trust; Maryland Departments of Health, Natural Resources, and Commerce; as well as University of Maryland Extension Service, UM Entomology Department and the Maryland Entomological Society.



☀ We are extremely grateful to our Calvert County family—especially the County Commissioners and the many departments and staff who support our mission throughout the year. From maintaining the grounds to assisting with events, advising on planning, and keeping our visitors safe and informed, their partnership is essential to our success. Special thanks to the County Administrator's Office, Department of Parks & Recreation, Sheriff's Office, General Services, Economic Development, Public Works, Master Gardeners, Master Naturalists, and many others who contribute their time, expertise, and energy to Annmarie.

☀ Annmarie relies on many non-profits & civic groups to help deliver our programs and ensure our success, including the Smithsonian Institution, Hirshhorn Museum & Sculpture Garden, National Gallery of Art, Rural Maryland Council, Chesapeake Bay Trust and locally: Calvert Marine Museum, Cove Point Natural Heritage Trust, SoMD Audubon Society, Solomon's Volunteer Squad & Fire Dept., Boy Scouts and Girl Scouts.

☀ Lastly, we love to partner with educators in our community including St. Mary's College of MD, College of Southern Maryland, Calvert Library, SoMD Homeschool Cooperative, Calvert County Public Schools, and CHESPAX.

- ANNMARIE CHAMPION'S CIRCLE -

Annmarie Champion's Circle is an annual giving society, comprised of dedicated individuals who believe in our mission and provide an important source of support for our annual budget, talented staff, and make our community-forward programs possible.

- | | | | |
|------------------------|-------------------------|----------------------------|------------------------|
| • Jon Baake | • Barbara Fringer | • The Herbert M. & Naomi | • David Reyno |
| • Robert Boxwell | • Lisa Garner | • R. Leavitt Family | • Olga Sylvia |
| • Joe Bozick | • Jane and Walter Grove | • Charitable Trust | • Pamela Teague |
| • Michele Brennan | • Stacey Hann-Ruff & | • The Lundgren Hendershot | • Laurie & Dave Uherek |
| • Margaret Brier | • Joseph Ruff | • Family | • The Van Metre Family |
| • Teresa Butt | • Evelyn & Vincent | • Carolyn & Eugene McHugh | • Foundation |
| • Francine & Ron Clark | • Hungerford | • Christine McNelis & | • Katie Watts |
| • Cari DeSantis & Ben | • Gregory Kernan | • Catherine Erickson | • Lee Woodfin & Tommy |
| • Vorhees | • Jan Kleponis, O'Brien | • Thomas M. Middleton | • Higgins |
| • Adrienne & Richard | • Realty | • Marcia Olson | • Karen & Leonard Zuza |
| • Donaldson | • Diane Kleinschmidt | • Paula Parsons & Jonathan | |
| • Laurie Ford | • Anica Landreneau | • Cutler | |

This report includes gifts made between July 1, 2023 and June 30, 2024.

Jane Bachman, Development Director



Jane Bachman

"Hope is the thing with feathers that perches in the soul, and sings the tune without the words, and never stops at all..." Emily Dickinson

We believe that Annmarie Garden is a place where hope lives and connection thrives. We witness this every day: from moms and dads connecting at our picnic tables while little ones explore and solve problems - big and small - in the Fairy Lolly, to the joy, pain and healing power of hundreds of art submissions to our seven to nine exhibits a year. And, as Emily Dickinson wrote, we hear it in the early morning bird song, when the raw beauty of nature contrasts with the marble and metal of our sculpture and art. Perhaps most importantly, we feel it when our friends, members, families, neighbors, volunteers, and YOU, remind of us the promise we make in our mission - our purpose for being - "Annmarie seeks to nurture the human spirit and contribute to a healthy society." We will keep that promise. In the garden, we are always hopeful and grateful for your support.

FY24 - EVENT SPONSORS

We appreciate the many ways our sponsors enhance our festivals with their financial support, promotion, in-kind donations, and volunteers. We work hard each year to build a vastly creative event schedule supported by many and made available to all through Museums for All program. All of which takes place in the safe and beautiful environment of Annmarie. Thank you!

- A.H. Hatcher, Inc
- APG Media
- Arts Council of Calvert County
- Asbury Solomons
- Bozick Distributors, Inc.
- Burch Oil
- Calvert County Democratic Women's Club
- Calvert County Parks and Recreation
- Calvert Health
- Carruth & Son, Inc.
- Cedar Point Federal Credit Union
- Cryptic Pizza
- Francine & Ron Clark
- G. H. Clark Contractors
- Constellation
- Corry Deale
- Cari DeSantis & Ben Vorhees
- Dickinson Jewelers
- Educational Systems Federal Credit Union
- Evelyn & Vincent Hungerford
- EXP Realty, Jennifer McGuire & Ginnie Roberts
- G & H Jewelers Inc.
- Garner & Duff Flower Shop
- Garner Exteriors
- C. L. Grimes Excavating
- Jane and Walter Grove
- Tommy Higgins and Lee Woodfin
- Just Tech
- Greg Kernan
- Jan Kleponis, O'Brien Realty
- George Leon Jr.
- Lexington Park Dentistry
- Carolyn & Eugene McHugh
- Chris McNelis
- Natural Green Systems
- The Patuxent Partnership
- PNC Bank
- Priddy Roofing and Exteriors
- G S Proctor and Associates, Inc.
- Quality Build Homes Inc.
- Renewal by Anderson
- Resource Management Concepts, Inc.
- Ruddy Duck
- Sabre Systems, Inc.
- Edward L. Sanders Insurance Agency, Inc.
- ServPro
- Shore United Bank
- Gail Siegel, O'Brien Realty
- Silver Moon Spa LLC
- SMECO
- Sneade Ace Hardware
- Spalding Consulting
- Pam Teague
- Top Hat Party Rental
- Toyota of Southern Maryland
- Laurie & David Uherek
- Katie Watts
- The Wills Group
- J. Calvin Wood, Jr. Inc.



"If you change the way you look at things, the things you look at change" – Wayne Dyer

FY24 - SPECIAL PROJECTS

Long-Range Expansion Plan - Adopted June 2024

Cari DeSantis, Chairwoman, Strategic Development Committee

Made possible by a grant from the State of Maryland Legislature

We are pleased to present the Long-Range Expansion Plan that was approved by our two boards in June of 2024, just as FY 24 was coming to a close. This report is the culmination of over 18 months of research, exploration, state and county conversations, community engagement, thoughtful consideration of our unique opportunities, and articulation of the exciting possibilities ahead. This Plan demonstrates our profound commitment to sustainable development that honors the natural setting of Annmarie Garden and the importance of art in the many ways art and creativity contribute to a community. Thousands of hours of work by hundreds of people involved in this effort—staff, volunteers, board and committee members, consultants, experts, government and community members—produced an ambitious vision for the future of Annmarie Garden that delivers significant benefits for the citizens of Calvert County, for the larger Southern Maryland area, and for all of our tens of thousands of visitors from near and far.

Our goal for this Plan was to articulate our hopes and dreams for a larger comprehensive, ecologically-friendly art and nature complex that underscores the inherent beauty and wonder of nature; our connection to the water and the Chesapeake Bay; and the beauty exemplified by culturally- and ecologically-influenced design, well-tended gardens, and the remarkable and enchanting seasonal changes of plants. Further, it was critical that the outcome be in harmony with the existing lovely gardens and wooded paths, 15,000 square foot Arts Building, and world-class Smithsonian-loaned sculpture situated in tranquil natural vistas that already attract over 100,000 visitors each year.

We hope you will agree that this document lays out a well-reasoned and executable expansion approach that will complement the peaceful natural setting of Annmarie Sculpture Garden & Arts Center, while offering new and exciting cultural, educational, and social possibilities to the benefit of the citizens of Southern Maryland and beyond.

Although this Plan will take decades to fully implement, there is much we can do in the shorter-term. We are excited to start this journey. We hope you will take some time to read the report, which can be found on our website, and join us on this journey.



✓ Annmarie Sculpture Garden & Arts Center

LONG-RANGE EXPANSION PLAN

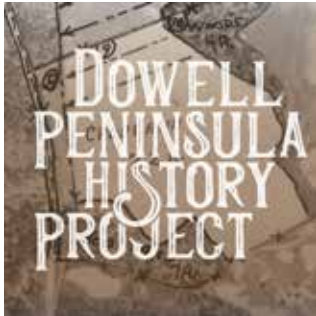
FY24 - SPECIAL PROJECTS

The Dowell Peninsula History Project

Francine Clark, Steering Committee Chairwoman

On Sunday, November 13, 2022, we kicked off a new endeavor at Annmarie - the Dowell Peninsula History Project. What started out as simple curiosity about how far back we could trace the land ownership of Annmarie Garden, quickly grew into greater interest about our place in the larger community. At the November 2022 meeting, we invited the community to join us we embarked on a wide-ranging exploration of the history of our peninsula. The response from our community was a resounding "yes," and thus began the Dowell Peninsula History Project.

Not long after that first organizational meeting, a small Steering Committee formed, made up of members of our community, to help guide the work of the project. With the assistance and support of researcher and local historian, Kirsti Uunila, the Committee began to conduct oral history interviews and scan important family and community records with the goal of creating an archive. The ultimate goals of the project are to tell the story of the Dowell Peninsula through public programs, exhibits, interpretive panels, walking tours, and other programs. Throughout FY 24, the Committee continued to meet and plan activities and identify potential grant sources. We are excited to see what the committee will accomplish in the coming years! To learn more about this project, email donor@annmariegarden.org.



Gough House Property Purchase

In February of 2024, the Koenig Private Foundation, one of the non-profit organizations that supports Annmarie Garden, was able to purchase an adjacent property at 13415 Dowell Road. The 2.2 acre property is located just across the street from the garden and includes a small house where our Horticulture & Grounds Manager now lives. We'd like to share the story of how the house came to be known as the Gough House.

Facebook post from April 18, 2024 . . .

Friends, we'd like to share a heart-warming story about the mystery of a WWII veteran's tombstone and our Dowell Peninsula History Project. One of the non-profit organizations that supports Annmarie Garden recently purchased a property across the street from the garden. While our grounds crew was cleaning up the property, they discovered a headstone buried in the leaves. The headstone was for a WWII veteran by the name of Melvin R. Gough, 1917-2006. Thanks to our history project, the Gough name was familiar to us, so we contacted Francine & Ron Clark. Francine is a member of our board, and both are on the Steering Committee of the history project. Francine and Ron quickly solved the mystery. At one time the Gough family owned the property we had just purchased, and in fact, Ron is related to Mr. Gough. Ron was able to contact Mr. Gough's daughter and within a few hours, we had a plan to move the headstone to St. John United Methodist Church, where Mr. Gough is buried.

We don't know how or why the tombstone was left at the house, but thanks to the people that are part of our Dowell Peninsula History Project, we had the resources we needed to develop a plan. For us, this story is a reminder of the importance and strength of community connections. It's an honor to be part of the Dowell community and we are grateful for the opportunities this project has given us to learn more about the people and families that have lived here. A heartfelt "thank you" goes out to Francine & Ron Clark, St. John United Methodist Church, and of course Mr. Gough and his family. Thank you for your service, Mr. Gough, rest in peace.



Gough marker, found in the leaves



Marker, moved to Gough plot at St. John United Methodist

FY24 - ANNMARIE HORTICULTURE & GROUNDS TEAM

During FY24, the Horticulture & Grounds Team added more than 6,625 native plants to the Annmarie Campus.

Our hard-working Horticulture & Grounds Team works tirelessly to care for our lovely property, maintain a vast array of equipment, and help prepare for, work, and clean-up after our many events and festivals. They are integral to everything we do here, from routine daily chores to the big job of managing 1000's of cars during a festival. They lovingly care for and nurture plants, they hang thousands of lights, they haul tables and chairs, help install art, and countless other big and small jobs that are needed on a 50-acre campus. They are also creative! They design native beds and build elements for the light show, to name but a few things. Check out some of their work during FY 24 . . .



FUN FACT

Joe's Homemade Deer Repellent includes the following ingredients:

- Organic Castile liquid soap as the sticker spreader
- A rotating mix of essential oils (eucalyptus, mint, tea tree)



Joe Mudd

Joe Mudd, Horticulture & Grounds Manager

FY 24 marks another successful year for our team, exceeding expectations in several key areas. We planted over 6,625 native plants, and added botanical signs to our native plant gardens identifying genus, species, and cultivar names, significantly enhancing our landscape and contributing to ecological restoration. We also planted a row of fastigiate oak trees along our road frontage—oaks support the highest number of caterpillars of any plant genus, providing vital ecosystem services to a myriad of other wildlife—which beautifies our surrounding community. Building on the efficiency improvements achieved in 2023, we implemented further enhancements this year, including reorganizing and improving storage in our sign shed. These optimizations, along with the automation of our irrigation system, have significantly reduced labor hours. The grounds crew was also instrumental in refurbishing the newly acquired Gough House property, removing lots of debris and painting the interior living/storage and office space.

FY24 - MAINTENANCE & REPAIR OF COUNTY-OWNED PROPERTY

A Partnership between Annmarie Staff & Calvert County General Services

Care of the buildings and grounds of Annmarie is the responsibility of the Annmarie staff and the staff of Calvert County General Services. We enjoy a cordial and productive relationship with General Services and are grateful for their in-kind support. General Services performs routine maintenance and repairs for the site, and pays for basic utilities at Annmarie, including electric, water and sewer, phone and internet, elevator maintenance and repair, HVAC maintenance and repair, trash removal, housekeeping supplies, and other miscellaneous building repair expenses.

The staff of Annmarie handles grounds care and improvements and housekeeping services. The following chart provides a detailed account of funds expended by Ann's Circle and the Koenig Private Foundation for the care and improvement of Annmarie.

CARE & IMPROVEMENTS TO COUNTY-OWNED PROPERTY

Funds Expended by Koenig:

Payroll costs for grounds & housekeeping	\$319,515
Subtotal – Koenig	\$319,515

Funds Expended by Ann's Circle:

General Groundskeeping expense <i>routine repairs, fuel, equipment maintenance, building repair, etc.</i>	\$58,822
Improvement to the Fairy Lolly Creative Play area	\$534
Plant materials	\$34,697
Replacement of Studio School Garage Door Opener	\$1,550
Annual Conservation & Related Costs of Sculpture Collection <i>county-owned and loaned works</i>	\$19,073
Mahan Rykiel Associates Consultants <i>related costs for long-range expansion planning</i>	\$56,123
Subtotal – Ann's Circle	\$170,799

TOTAL spent on grounds care & improvements to county property by Koenig & Ann's Circle	\$490,314
---	------------------

FUN FACT

Annmarie Garden is a 52.2 acre campus, consisting of three adjoining properties.



FY24 - MAJOR EVENTS AT-A-GLANCE

Most visitors come to Annmarie for our classes, programs, and annual events. Most of our income is generated during large festivals, like Artsfest and Garden In Lights. The entire staff is involved in the planning and production of annual festivals, and it is incredibly rewarding to see an event go off without a hitch! Moreover, it is nice when the weather cooperates!

We love finding unique ways to connect events to our mission. For example, you may not realize it, but the Fairy & Gnome Home Festival is a nature play event. It is designed to connect families to the Earth, to get them together in the woods, playing with sticks, pinecones, and other natural elements. The Insectival brings together art and nature, for a day of unique buggy learning and creativity. Additionally, our Garden In Lights holiday arts program is designed to get families outside, walking and enjoying the cold weather, as they are surrounded by our "light sculptures" and light installations.

Whatever the event, our goals are to get guests engaged with nature, to inspire them through creative and intergenerational activities, all while encouraging a bit of outdoor exercise. We love designing and presenting events and we work hard to keep them unique - we are always learning new ways to improve our events and keep them interesting and relevant.

INSECTIVAL

July 2023
Nature Education Event

1,689 guests

16 organizations
14 vendors
6 food vendors
36 volunteers



GARDEN IN LIGHTS

December 2023
Holiday Program

37,436 guests

126 performers
125 vendors
7 food vendors
167 volunteers

ARTSFEST

September 2023
Art & Music Festival

9,591 guests

208 visual artists
167 performing artists
9 food vendors
63 volunteers



FAIRY & GNOME HOME FESTIVAL

April 2024
Nature Play Event

4,572 guests

21 performing artists/entertainers
50 vendors
7 food vendors
10 activity vendors
52 volunteers

HALLOWEEN IN THE GARDEN

October 2023
Fundraiser, Community Event,
Vendor Fair

5,327 guests

62 vendors &
organization booths
5 food vendors
28 volunteers



ROSÉ SOIRÉE (NEW!)

Wine Festival
May 2024

1,290 guests

10 performing artists/entertainers
78 vendors
6 food vendors
10 tasting vendors
10 activity vendors
22 volunteers

FY24 - PERFORMING ARTISTS

Annmarie offers many opportunities for performing artists to showcase their array of talents with the sculpture gardens and gallery as their backdrop. Every year, we welcome a range of performers such as solo musicians, dancers, actors, costumed characters, magicians, and choral ensembles, either featured as our main entertainment or to create the ambience that helps us tell a story. Each artist is hand selected for our many events to complement our exhibits.



ANNMARIE AFTER HOURS
15 PERFORMERS



ARTSFEST
167 PERFORMERS



GARDEN IN LIGHTS
24 PROFESSIONAL PERFORMERS
(+102 GIRL SCOUTS)



FAIRY HOUSE FESTIVAL
21 PERFORMERS



FY'24 GRAND TOTAL
237 PERFORMERS!



ROSÉ SOIRÉE
10 PERFORMERS



Kreea Greaves

Kreea Greaves - Event Specialist, Education

Working in this place is truly a blessing. I never would have imagined that my life experiences would lead me here. I have been fortunate to receive a degree in Theater, Film, Media, and Dance. With that degree, I have been able to travel all over the United States and Malaysia working as a professional dancer or as production support. When work became slow, I switched gears and joined Local 272 Ironworkers Union, where I really homed in on my skills of creating with my hands. This place offers something for everyone. Whenever I can meet artists here, I like to tell them, "Thank you for sharing your art." To me, it's a glimpse into one's soul. The artists are sharing a part of themselves with Annmarie.

FY24 - ARTSFEST HIGHLIGHTS

Artsfest 2023 Fine Arts Festival - September 18 & 19, 2023

Artsfest is our signature arts event and our largest 2-day event, and for many it embodies all that is special about an event at Annmarie – a glorious celebration of the visual and performing arts with great shopping, music, food and drink, and artsy activities set amidst the spectacular backdrop of our beautiful sculpture garden. Artsfest is also economically important to the more than 350 artists, performers, and food vendors who participated in 2023. Festivals like Artsfest, are critical to the livelihood of all those involved, and in particular, we are proud to provide 208 visual artists the opportunity to sell their work.

Did you know?

35 bands performed
at Artsfest this
year!



208 ARTISTS



167 PERFORMERS



9 FOOD VENDORS



6 KIDS ACTIVITIES



63 VOLUNTEERS



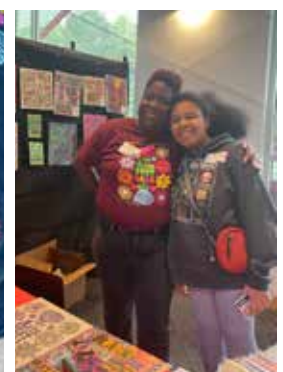
4 ARTIST AWARDS



9,591 GUESTS



2023 T-SHIRT DESIGN by Sarah Matthews



FY24 - ANNMARIE GARDEN IN LIGHTS HIGHLIGHTS

Annmarie Garden in Lights 2023 - November 24, 2023 - January 1, 2024

Garden in Lights continues to grow and improve each year - and continues to be our largest, longest, and most complex production. In FY 24, the light show accounted for about 35% of our annual visitation, and about 22% of our income. Profits from the show are critical to generating funds for payroll and our programs, but we have also worked to create a balance between making money and finding ways to give back to our community during the holidays. Thanks to the generosity of our sponsors, we have been able to create joy in our community, most notably through Special Need Night, Local Heroes Appreciation Nights, and a discount ticket program for SNAP card holders. Our community partners make the magic happen. Thank you!

34 Nights
37,436 Guests



SPECIAL NIGHTS

Special Needs Night
Local Heroes Nights
Military • First Responders • Educators
Wine & Lights
Teen Night
Golf Cart Tours
Fa La La Event
Visit with Santa
Scout Caroling Night
Holiday Character Nights
Pet Night

25 Sponsors
167 Volunteers



**From the first light that goes up, to the last one that comes down,
it takes four months to put on our light show.**



126 Performers



HOLIDAY TRAIN DISPLAY
BY GEORGE LEAH AND HIS TEAM



**LEGO Holiday Village
Exhibit - 92 creations**

BUY LOCAL HOLIDAY SHOPPING

Ornament Show & Sale
29 artists



Holiday Gift Show & Sale
33 artists



Pop Up Shops
60 vendors



46% of our gift shop sales take place during the holidays.

FY24 MARKET PROGRAM

Our BUY LOCAL Market Program supports regional entrepreneurs making homemade, handmade, and homegrown products. With reasonable booth fees and dedicated crowds, our Markets are a great way for vendors to sell their wares, test out new products, and raise overall awareness about their business. We love getting to know the vendors and watching them grow their business. Our region is rich in talent and creativity, and it is an honor to host the Market Program in support of their entrepreneurial endeavors. BUY LOCAL!

FY'24 TOTALS

Vendors: 353

Guests: 7,750

Sea Glass & Beach Crafts Market

July 2023

59 Vendors

2,030 Visitors



Craft & Flea

August 2023

53 Vendors

1,215 Visitors



Monster Market

October 2023

80 Vendors

1004 Visitors



Holiday Market

December 2023

59 Vendors

1,128 Visitors



Valentine Market

February 2024

78 Vendors

1,128 Visitors



Mother's Day Market

May 2024

78 Vendors

742 Visitors



Cultural Arts Market

June 2024

12 Vendors

503 Visitors



FY24 - AFTER HOURS IN THE GARDEN

Evening hours in the garden are delightful and offer a wonderful opportunity for outdoor dining, workshops, and enjoyment of our incredible sculpture garden.

Annmarie After Hours



7 evening events
celebrating the opening of new exhibits

Food Truck Fridays



11 select Fridays year-round
allowing visitors to explore the site in the evenings

Adult Clay Classes



popular evening classes
held year-round in the Clay Studio

Art Blooms Reception



a special after hours event
in collaboration with Calvert Garden Club

Private Rentals



assorted proms, weddings, and more!

Bad Art Night



4 nights
hilarious adults-only bad art-making fun

FY24 - ROTATING EXHIBITS

The galleries in the Murray Arts Building present a varied selection of exhibits each year. Each exhibit includes carefully crafted programs and events designed to complement the show and provide opportunities for visitors to interact with artists and better understand art. The calls for our shows are national in scope, but they also focus on local and statewide representation. We feature guest jurors through the Smithsonian Affiliates program and other known institutions, bringing unique perspectives and voices into the mix.

Rotating Exhibits during FY '24

- | | |
|--|---------------------|
| • Art Blooms Floral Design Exhibit | 33 Designers |
| • Warm and Cozy | 46 Artists |
| • Holiday Show + Sale '23 | 35 Artists |
| • Holiday Train Display | 12 Helpers |
| • Holiday Lego Display | 161 Builders |
| • Ornament Show + Sale | 29 Artists |
| • Prominent: Sculptural Works by Claudette Taylor | 1 Artist |
| • Artists-in-Action | 30 Artists |
| • Swirl and Swoosh: Celebrating the Work of Mary Bloomberg | 1 Artist |
| • Metamorphosis: Recycled, Repurposed, Reimagined | 64 Artists |
| • MORE! Embracing Excess | 52 Artists |
| • POP! Art with Mass Appeal | 37 Artists |

Total Artists 501



Reiker Dean

Reiker Dean, Exhibits & Education Specialist

Working at Annmarie this past year has only invigorated my love for the arts. From working with community exhibitions and top-notch juried national exhibitions, installing sculptures around the garden, to dressing up as a superhero and leading a field trip program, each day is an exciting, fresh experience. It fills my heart with joy to bring such crucial artistic exposure and education to the community of Southern Maryland.



FUN FACT

The Exhibits Team estimates that there are 204 layers of paint on the Mezzanine Gallery walls.

FY24 - ARTLAB CREATIVE REUSE STUDIO

About the artLAB

Open daily, the artLAB is a creative space inside the Arts Building where visitors of all ages learn ways to reuse everyday trash items and transform them into works of art. We receive clean recyclable donations (that would otherwise head to a landfill) from visitors throughout the year to keep our supplies stocked. In the artLAB, you can participate in a workshop or simply use the open studio time to create your own masterpiece.



DID YOU KNOW?

The artLab relies almost entirely on donated materials from our local community. Businesses and individuals regularly donate items that become fun art supplies for visitors to use. From corks to CDs to hardware and plastic packaging, we make use of a whole assortment of reclaimed items. You can help, too! Our artLab wishlist can be found on our website.



DID YOU KNOW?

The artLab welcomes every field trip group and summer camp that comes through our doors. That's over 2645 students per year! Bad Art Nights are another fun way we encourage adults to explore creative upcycling. We welcomed 325 "Bad Artists" for these events in FY24.

FY24 - CLAY STUDIO & FAMILY CLAY DATES



Sasha Dulyachinda

Sasha Dulyachinda, Clay Studio Faculty

Over the years, I have worked in the Clay Studio in different capacities. As a potter, as the clay studio manager, as a camp teacher, and adult wheel throwing instructor. I love seeing the creativity flowing throughout the studio and getting to share ceramics with all ages!

178
people served in our
Outdoor Family Clay Dates

322
visits to our
Open Clay Studio Program

228
adult clay class sessions,
resulting in
1,333 student visits



FUN FACT

Thanks to the newly purchased pug mill, our studio now recycles old clay! This produces all the clay we need for our youth and family clay programs.



"I continue to use the Clay Studio at Annmarie Garden because it provides a welcoming and supportive environment that fosters both creativity and personal growth. The studio offers a variety of classes and workshops taught by skilled artists and educators, catering to all levels of experience. The recent upgrade to the facility, with improved ventilation, has enhanced the comfort and safety of the space, allowing for year-round participation. Engaging with the clay community at Annmarie Garden since 2020 has been a therapeutic and enriching experience, connecting me with fellow artists and the broader artistic community"

-Sherri Norris, Clay Studio patron

FY24 - ARTIST RESIDENCY PROGRAMS

Annmarie Garden is always more vibrant when artists are around to inspire our visitors! Annmarie welcomes artists throughout the year through a variety of short-term residency options. Artists and makers from near and far utilize our galleries and park to create work, engage with visitors, and build community.

ARTISTS IN ACTION

temporary studio program/
short-term residencies
April- May 2024

39 artists

In the spring, AMG galleries are transformed into week-long artist studios, providing a unique retreat and experimental space for artists to develop new work and engage with visitors. You'll find a new assortment of artists each week, often mixing and mingling their styles and techniques and inspiring one another in the process. Plein air painters and other outdoor artists can also be found working outside in the Garden. Several of these artists host workshops while here.



MLK DAYS

residency, community art event,
solo show featuring artist:
Claudette Taylor

Community Project:
Shaping the Dream,
A Community Clay Event

285 participants

This short-term residency welcomes a regional artist to celebrate the life and legacy of Dr. Martin Luther King, Jr. through a free, uplifting 3-day art-making event and solo show. This year, we welcomed sculptor Claudette Taylor from Lexington Park. Her community project **Shaping the Dream: A Community Clay Event** inspired 285 people of all ages to sculpt a bas relief tile out of clay to add to a growing wall display. The results were colorful, creative, and poignant. Claudette's accompanying gallery show, **Prominent**, remained on view through February.



SUMMER RESIDENCY & PUBLIC ART PROJECT

Featured Artist: Jan Master
Public Art Project:
Meander
July-August 2024

Each summer, AMG invites one artist to our longest residency program to build a sculpture in the park with our daily visitors. This year, Florida artist Jan Master worked with guests to entwine colorfully stained twigs and natural tubes into a net-like structure that meandered through the trees. This community artwork mimicked **net/work**, the larger sculpture the artist created out of large branches.



FY24 - COMMUNITY ARTS

About Community Art

While we take pride in our service to professional and emerging artists, it's our community-based art projects that fill our hearts with joy. There are no soloists in community art. These projects rely on human interaction, the exchange of ideas, collaborative processes, and artistic experimentation. They embrace varied perspectives with common purpose, providing one shared experience. Community art welcomes all ages, abilities and talents into the fold.

Shaping the Dream

3 - Day MLK Community
Clay Event
285 Visitors



Meander

A Summer Public Art Project
6,841 visitors

Fairies In The Garden Exhibit

180 fairy houses

Yarnbombers Club

Ever-growing fiber art
installation in the park.
Anyone can contribute!

Fairy Lolly Beautification Project

30 Homeschoolers and their adults from the
Southern Maryland Homeschool Co-Op
32 first-graders from the Tidewater School

*"Volunteering at AMG gave me hands-on experience with art,
nature, and responsibility; all while encouraging me to bring my
own creativity to every task I was given."*

Oli Hatfield, Teen Leadership Volunteer



FY24 - FIELD TRIPS AND YOUTH GROUPS

Our field trip and summer camp programs were bustling this year! From school groups, to daycares, to scout groups, to our own summer camp and homeschool programs, our campus was buzzing with excitement and creative energy. Their curious minds and wild imaginations always inspire us to dream up more fun!

Field Trips - 27 groups, **885 children and adults**

CHESPAX Field Trips - 26 visits, **1,634 children and adults**

Birthday Parties - **41 party groups, 1,105 guests**

5 Weeks of Summer Camps - **186 campers**

Teen Leadership Program - **41 teens**



FY24 - NATURE NOOK EXHIBITS & PROGRAMS

The Nature Nook is a fun and inviting space where visitors enjoy interactive experiences on a variety of topics. It features hands-on learning activities, rotating exhibits, and accompanying programs for all ages. The exhibit theme changes every year, but you can always find fun stations like the Creature Feature, the Magnification Station, the Book Nook, and Animals-in-Residence. Stop in to meet to our snake, turtles, axolotl and other critters!

Fall / Winter 2023 Exhibit

Wildlife Diets: From Chew to Poo!

Spring / Summer 2024 Exhibit

Lifecycles of the Flora and Fauna

FY'24 Nature Programs

- **Chespax Field Trip Program** – This program serves **EVERY second grade student in Calvert County**. All field trips have activities, followed by lunch; our educators then guide the students on composting, proper recycling procedures, and creative reuse.
- **Family Nature Walks**- A nature show and tell followed by a walk. The topics complemented this year's Nature Nook theme, and no two walks are ever the same!
- **The Birding Trail and Bluebird Boxes**- We continued our participation in the Calvert Birding Trail, and cared for 11 bluebird boxes around the Garden.
- **The Critter Care Team**- We couldn't keep animals without the help of our wonderful Critter Keepers! This year featured many new visiting critters, including salamander larvae, tadpoles, aquatic snails, and more!



DID YOU KNOW?

Axolotls are unique salamanders that retain larval features throughout their lives, including feathery external gills!

"Volunteering in the Critter corner at Annmarie Garden has become a highlight in my week. I love having the hands-on opportunity! I really enjoy seeing the visitors get excited about all the cool animals we have in our area!"

Megan Butler, Critter Keeper



Hester Burch

From Hester Burch, Naturalist

Lifecycles of the Flora and Fauna was a throwback to the popular "Lifestyles of the Rich and Famous" television show. I had a lot of fun developing this exhibit with the help of my co-workers. It featured a diversity of plant and animal life cycles, with a focus on life stages. All of these live critters were showing in different stages of their lives: tadpoles, caterpillars, aquatic insects, and more! The exhibit also explored the weird and wonderful world of metamorphosis. Additionally, I developed supporting programs that were related to these themes for the Family Nature Walks, Summer Camps, and Homeschool Days.

FY24 - NATURE - THEMED EVENTS

Some of our nature programs have been so popular they have grown into full-sized events! From Earth Arts Fest, to the Fairy House Festival and Insectival, to the outdoor Holiday Wreathmaking Party, our nature events get people outside, exploring, and learning about the world around us.

MONTHLY FAMILY NATURE WALKS

These gently guided nature walks investigate the forests and fields at Annmarie. They are lightly themed, but allow children to investigate and discover all kinds of wonders. This year we held 8 nature walks which covered topics like life cycles of plants and insects, birds, spiders, animal babies and mothers. We welcomed **84 families**.



HOUSEPLANT PROP & SWAP

Guests learn the various ways of cutting, rooting, and transplanting a variety of houseplants and outdoor garden plants to take home and nurture.

Door prizes and plant sales are also held with our partners from Wentworth Nursery, Goodman LLC, and Pitcheresque Plants. **51 guests**



FAIRY & GNOME HOUSE FESTIVAL

Equal parts artful creativity and nature learning, this imaginative day celebrates our wonderful fairy house exhibit and incorporates educational activities about local woodland flora and fauna.

4,572 guests



INSECTIVAL

This festival celebrates the whimsical world of insects, and how important or destructive they are to plants, wildlife, and humans. From pollinators to parasites, families touched live and preserved specimens. **1,689 guests**



HOLIDAY WREATHMAKING PARTY

Visitors gather in the park and learn how to use native evergreens, grasses, berries, and seed pods to create a lovely holiday wreath for their home. This year, a storm blew in, but we adapted and moved the party inside! **50 guests**



FY24 - TEEN INITIATIVES

Funded in part by the Watts Youth Program Fund

New in FY'24 we expanded the Counselor-In-Training (CIT) program into our **Teen Leadership Program** which helps teens develop leadership skills while also earning service learning hours. From festival prep to Critter Care to our summer CIT program, Annmarie's wide variety of offerings allows for a broad range of opportunities to gain different experiences. Additionally, we support them throughout the program by recognizing their skills, recording their hours and providing letters of recommendation for college applications and internships - 41 teens participated.



Helen Lindsey

Helen Lindsey, Exhibits & Education Specialist and Teen Leadership Program Coordinator

I'm inspired by all the teens in this program! Everyone brings their own unique talents. The young kids in our summer camp program especially love our CITs. We often see former campers become CITs, and even some go on to become summer college interns. I'm proud of the community we're building here for these future leaders. Teen Leadership encourages them to learn about themselves, build skills and make connections. They leave here with a wealth of knowledge, experience, and a network they can build on as they continue to grow.

FY24 - INTERSHIPS

We love nurturing the talents and skills of college students! AMG has two internship programs, the Community Arts Internship and the Kay Daugherty Summer Internship. Both jobs provide these students the opportunity to gain real-world experience in a non-profit community organization. They assist with our classes, events, and daily operations. They also develop special projects while they are here, contributing to the whimsy and artistry of the park and our programs. They become role models for our campers and teens, and are an integral and special part of what we do.

COMMUNITY ARTS INTERNS



Kira

"As an intern working at Annmarie, it was a great learning experience that allowed me to have a better understanding of the impact we can have. As an artist, it was rewarding being able to learn different skills of setting up gallery installations and creating projects to show. This opportunity is one I will remember as I move forward."

- Kira, Community Arts Intern



Anabel

"My time as an intern at Annmarie Garden was an incredibly memorable and rewarding experience. It provided me with the opportunity to work as a creative professional in a community oriented environment. I was able to get hands on experience while working on pretty much anything and everything at Annmarie. I'm incredibly thankful for the people who made it possible and for the time I was able to spend immersed in such an artful environment. This internship marked the beginning of my journey as a creative professional, for that I am immensely grateful. Annmarie Garden makes a truly wonderful impact on the community and the artists they work with."

-Anabel, Summer & Community Arts Intern

KAY DAUGHERTY SUMMER INTERNSHIP PROGRAM



Anna



Eliza



Kate

FY24 GUEST SERVICES

We are a tourist information center

The staff and volunteers that work the Welcome Booth and Front Desk are the first people that greet and orient guests. They take great pride in making everyone feel welcome at Annmarie and enjoy sharing happy visitor stories with the rest of the staff. We are grateful for the smiles and good humor that our frontline staff bring to their work every day.

Whether you are here to visit an exhibit, explore the Nature Nook, play in the Fairy Lolly, or stroll through the Sculpture Garden, our Guest Services team is here to help you find your way. They are also happy to suggest other activities while you are in Southern Maryland, including restaurants, museums, parks, and other attractions. Just ask!



Colleen Cofod

Colleen Cofod, Guest Services Manager

Annmarie Sculpture Garden is a very special place for me. My family and I have been coming here since the very beginning of it. We have attended Artsfest and other events since when it was just a gravel path. I love sharing my many memories of the place with my co-workers and visitors. I do not hesitate to share what a special and magical place it is with anyone willing to listen. The magic that is Annmarie Garden is uncanny. Many visitors express just how entering the gates to the garden brings such a sense of peace, calm, whimsy, and joy. It is often a place to reflect and be grateful. Becoming a part of the staff here is such a gift to me in many ways, and I continue to be grateful for the opportunities to share that with our visitors. Getting to hear their stories and see them delight in discovering this special place is what makes my job so enjoyable.



Our Front Desk volunteers, like Judy, are crucial to operating Annmarie and greeting our guests.



Carolyn Schindler

Carolyn Schindler, Weekend Supervisor

I really enjoy my position as Weekend Supervisor at Annmarie Sculpture Garden & Arts Center. One of the highlights of my job is greeting visitors and learning about their backgrounds. Whether they are locals or travel from afar, I am always curious to hear their stories and what brings them to our beautiful garden. I find it incredibly fulfilling to engage with visitors and share exciting updates about our exhibits and events. Additionally, I take great pleasure in recommending activities and attractions within our garden, especially for families with young children. Their enthusiasm and curiosity make my job even more enjoyable. Working alongside my colleagues, we create a warm and welcoming environment for all of our visitors, ensuring they have a memorable experience.



FY24 - GIFT SHOP

Annmarie's Gift Shop is a place that continues to spread the mission of connecting people to art and nature. Every item in our Gift Shop carries the spirit of creativity, from handmade jewelry to beautifully crafted garden decor. Our diligent staff is always on-site to assist guests in choosing the perfect piece, making every visit special and memorable.

Featured Maryland Artists 14



Gross Gift Shop & Gallery Sales \$143,250



Ornament Show & Sale 29 Artists



Proceeds from the Gift Shop support the operating budget



Alberto Rodriguez

Alberto Rodriguez, Guest Services Attendant

One of my favorite things about working at Annmarie is being part of the big community events we host that bring joy to so many people. It's always nice to see the smiles on people's faces when they come here and see the results of our staff's hard work. Everyone at Annmarie comes ready to work and with a friendly demeanor every day. We give our 100% to provide an experience for our guests that they will remember!



Evgeniia Iakovleva

Evgeniia Iakovleva, Gift Shop Lead

One of my favorite things is to assist our guests with choosing the right gift for their friends and family. Sometimes it can be hard to pick between one-of-a-kind mugs, handcrafted jewelry, garden embellishments, meditation boards, or Chesapeake Bay souvenirs. I love to hear their story and help with finding a perfect gift. And don't get me started on a kid's shop and our Axolotl section - the choice of puzzles, toys, and games is overwhelming! Annmarie's yearly Ornament Show is another venue I love to organize for our guests. Connecting with artists and seeing their fanbase grow is truly wonderful!



FY24 HOUSEKEEPING & PRIVATE RENTAL TEAM

Not only does our Housekeeping Team take care of the daily cleaning tasks, they also supervise our private rentals. Additional staff are called in for these large events, and the team works together to keep our beautiful Arts Building looking its best for weddings, proms, and corporate events. We'll let you in on a little secret – we love proms! Opening our doors to teens is a true pleasure, and we often see familiar faces, including students who have volunteered at Annmarie and faculty we have worked with on various projects. It's a great privilege to roll out the red carpet to local high schools!



It's exciting to watch the local high schools transform the gallery spaces for their events!



Aletta Brown and Joe Gordon

Our housekeeping team is essential to creating a pleasant experience for our guests and helping care for our unique facilities. The Annmarie campus includes gallery space, offices, studios, classrooms, kitchens, and artist residences, and each space requires special care and consideration by our housekeeping staff. From daily tasks, to the big job of working festivals, to private rentals, they are always on the move keeping our buildings looking their best. When all the guests are gone, it's the housekeeping team that steps in to clean up and get us ready for the day. Hats off to our great team!

FUN FACT

We are a popular dog walking spot.
We love seeing the regulars and
meeting new four-legged friends!



FY24 - BUDGET REPORT

	ANN'S CIRCLE	KOENIG	TOTAL
INCOME			
BOCC - PAYROLL GRANT		303,415.00	303,415.00
MISC OTHER INCOME		14,379.69	14,379.69
KOENIG FUNDS		45,000.00	45,000.00
ADMISSIONS	53,064.79		53,064.79
DONATED REVENUES	49,905.14	30,000.00	79,905.14
EDUCATION INCOME	144,798.49		144,798.49
EVENTS INCOME	657,272.91		657,272.91
GIFT SHOP REVENUES	143,250.79		143,250.79
GRANT REVENUES	276,912.30	56,885.93	333,798.23
INTEREST & DIVIDENDS INCOME	32,039.59	65,986.76	98,026.35
MEMBERSHIP PROGRAM	142,555.00		142,555.00
RENTAL INCOME		44,197.60	44,197.60
SPONSORSHIP & DEVELOPMENT	151,429.69		151,429.69
Total Revenues	1,651,228.70	559,864.98	2,211,093.68
Total Income	1,651,228.70	559,864.98	2,211,093.68
GIFT SHOP COST OF GOODS SOLD	65,783.78		65,783.78
Total COGS	65,783.78	0.00	65,783.78
Gross Profit	1,585,444.92	559,864.98	2,145,309.90
EXPENSE			
PAYROLL & RELATED COSTS	803,208.82	472,742.75	1,275,951.57
BY SOURCE OF SUPPORT			
ADMINISTRATIVE &	132,320.96	8,100.45	140,421.41
OPERATIONAL EXPENSES			
CONTRACTED SERVICES	119,189.11	56,327.50	175,516.61
EDUCATION EXPENSE	44,384.15		44,384.15
EVENTS EXPENSE	106,669.61		106,669.61
FACILITIES & GROUNDS	124,184.42	22,694.28	146,878.70
GIFT SHOP EXPENSES	10,033.40		10,033.40
MARKETING & DEVELOPMENT	136,438.20		136,438.20
MEMBERSHIP & VOLUNTEER PROGRAM	4,443.28		4,443.28
RESTRICTED PROJECTS EXPENSE	104,276.46		104,276.46
Total Expense	1,585,148.41	559,864.98	2,145,013.39
Net Ordinary Income	296.51	0.00	296.51



Linda Bracey

Linda Bracey, Business Manager

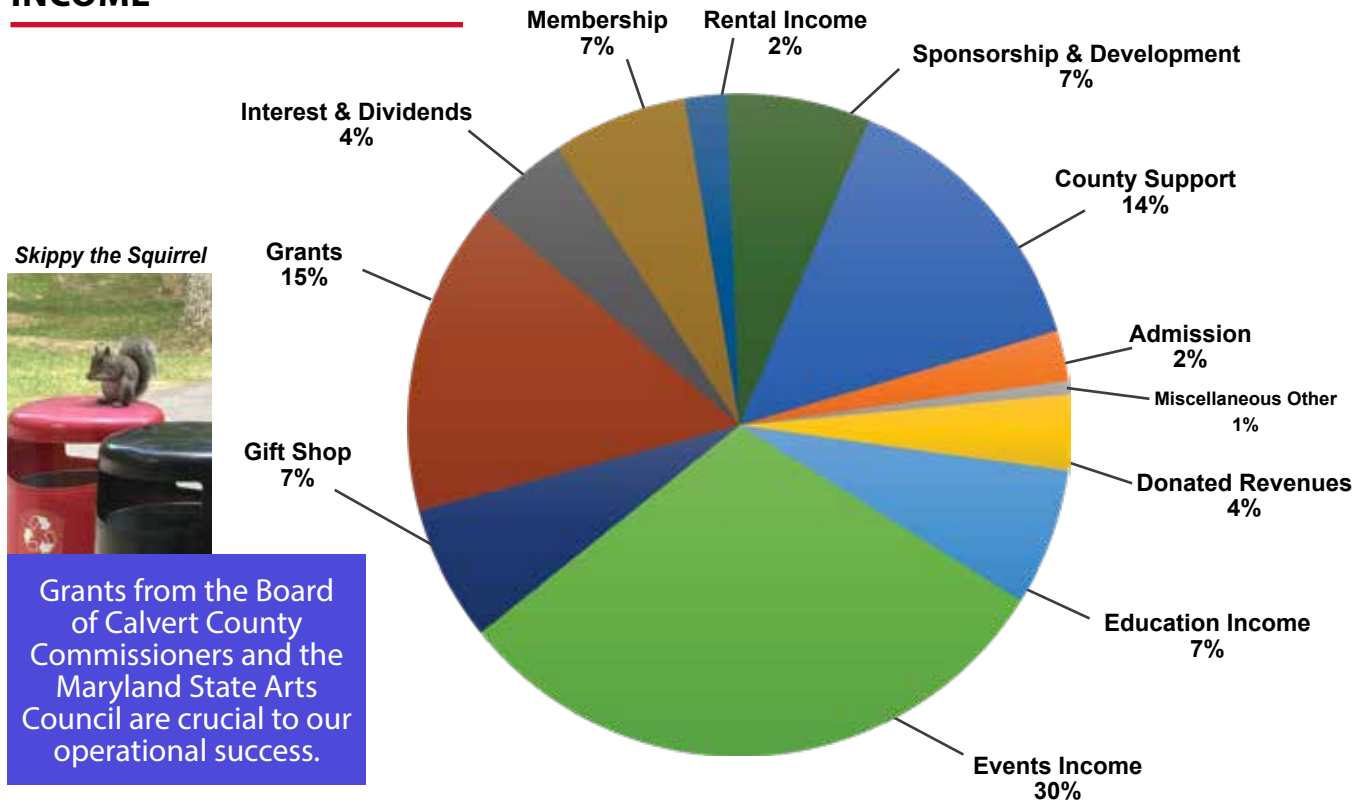
Annmarie Garden is a wonderful, enchanted, and whimsical place, not only for visitors, but also for those of us who work here. From purchasing for the gift shop, to managing technology, to organizing events and keeping track of finance, Annmarie offers opportunities to stretch the mind and be creative in a variety of differing ways. There is always something new, exciting, and creative to work on. Never dull, always engaging and delightful to be here.



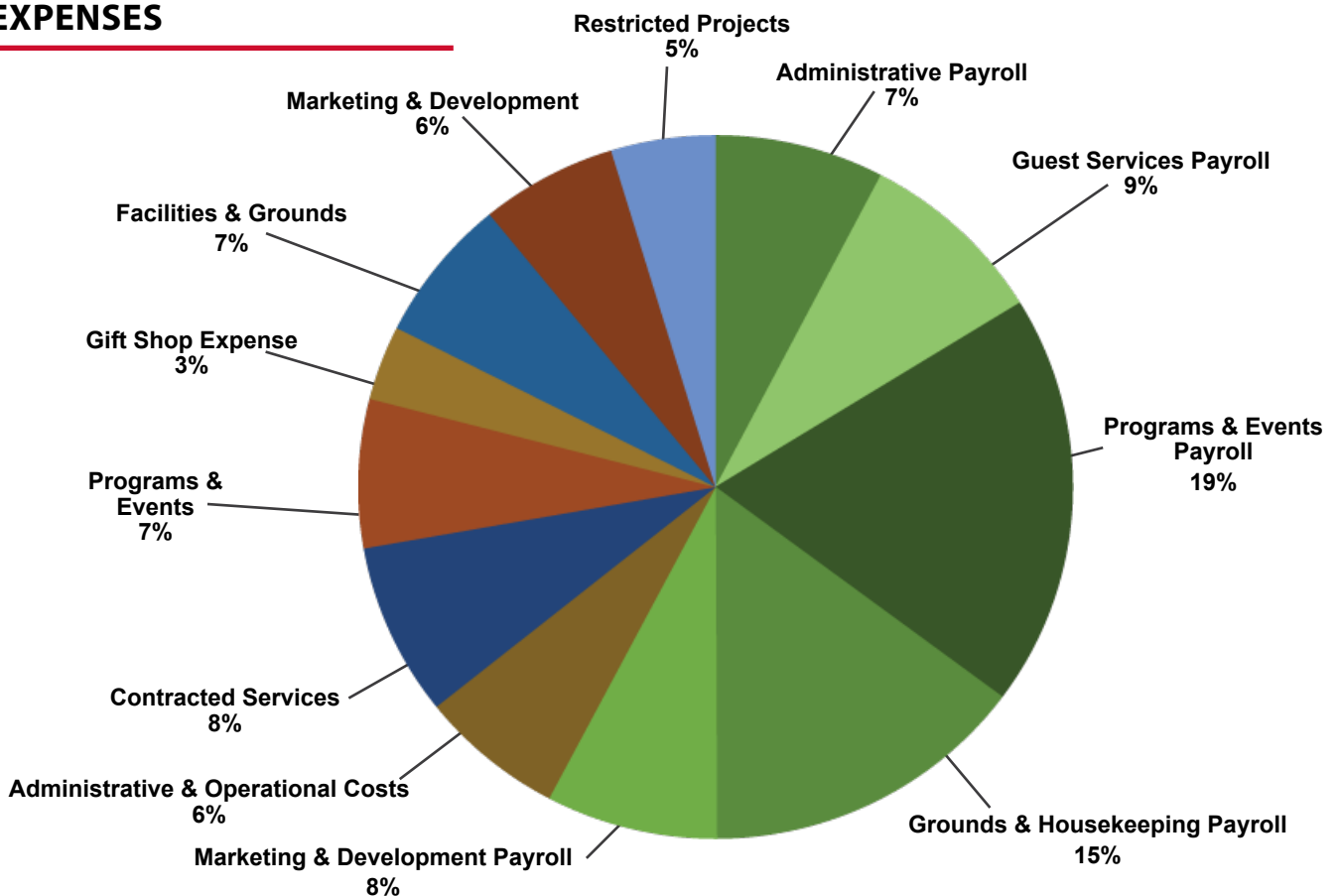
FY24 - BUDGET BREAKDOWN

ANN'S CIRCLE & KOENIG COMBINED

INCOME



EXPENSES



FY24 - GRANT FUNDS RECEIVED

Both of the non-profit organizations that support Annmarie – the Koenig Private Foundation and Ann's Circle – work very hard each year to pursue public and private grant opportunities. We are grateful to our FY24 granting partners for their support of our overall budget and special projects. **The Van Metre Family Foundation** and the **State of Maryland Legislature** have both been multi-year supporters, whose funds allow us to undertake special projects.

Critical to our general operating budget, are the grants we receive from the **Board of Calvert County Commissioners** and the **Maryland State Arts Council**. General operating grants help retain professional staff, fund programs and events, and cover overhead. Together, these grants allow us to fulfill our mission and serve our community. Thank you!

Koenig Private Foundation

BOCC Operating Grant	\$303,415
Chespax - Calvert County Public Schools <i>Covers staff cost for 2nd grade program</i>	\$4,500
Van Metre Family Foundation <i>Special Projects</i>	\$30,000
Maryland State Arts Council <i>Pandemic Emergency Relief Grant</i>	\$49,143

Ann's Circle Inc.

Operations & Program Grants

2022 Legislative Bond Initiative - Funds Received <i>State of Maryland</i>	\$75,000
BOCC In-Kind Support <i>Utilities & Overhead</i>	\$46,839



Hayden White, Assistant Horticulture & Grounds Manager



Hayden White

This year has been all about growth, both for our landscape and for myself. As the person responsible for maintaining all of our equipment and vehicles, I've had the opportunity to care for the tools that bring our mission to life. With a strong focus on planting native species and making our grounds more welcoming, I'm proud to play my role in supporting the team that makes this place so special. I'm especially grateful to be part of an organization that invests in its people. Thanks to the support here, I've continued gaining valuable experience working with small engines and a wide range of power equipment. I've also gained valuable experience in landscaping and lawn care—skills that have deepened my appreciation for the work we do and opened new doors for me personally. I hope to carry

all of this forward into future projects and eventually into my own endeavors. It's been a rewarding year, and I'm looking forward to what comes next.

FUN FACT

We utilize two mulch types in the garden:

- a homemade mix of repurposed debris collected on site
- "green mulch" utilizing dense plantings of native ground cover to suppress weeds

WHAT IS IMPORTANT TO REMEMBER?

WE DRIVE TOURISM

We bring tourists to Southern Maryland who spend money in our community while they are here.

WE ARE GOOD FOR LOCAL MERCHANTS

Attendees at our events, including county residents and visitors, spent money at nearby businesses, including hotels, restaurants, and shops.

WE ARE A TOURIST OFFICE

We greet visitors to Calvert County and help them discover other interesting experiences in the area.

WE MEAN BUSINESS

We create business opportunities for countless regional businesses through our many activities and events.

QUALITY OF LIFE

We promote high quality of life and help attract new businesses and residents to the area.

WE ARE UNIQUE

As a Smithsonian Affiliate, our uniqueness draws attention to our community and sets us apart as something special.

WE COMPLEMENT OTHER COUNTY ATTRACTIONS

We offer unique activities and programs that complement other county assets, rather than compete with them.

WE ARE POPULAR

Our 30-acre park is a popular destination for county residents and guests. We welcome more than 107,000 people to Annmarie each year.

WE ARE COMMUNITY

We produce some of the largest and most popular community events in the region, including Annmarie Garden In Lights and Artsfest. We help bring people together and strengthen community ties.





Thank you for taking this journey with us.

We are proud to be members of a Community that Cares. Community is at the heart of everything we do at Annmarie Garden. It's a wonderful day when school buses unload dozens of elementary school children for art and nature programming. It's a beautiful moment when the gates to Artsfest open to thousands of artist-supporting families and individuals. And when families, dogs, and butterflies meet on the garden paths, our community mingles in the most special way!

Without hesitation, we can proudly proclaim that it is the kind and generous spirit of the Annmarie family that permeates the very air of this place. We see it in our community of volunteers, artists, members, donors, grantors, educators, and our staff. From all of us at Annmarie Sculpture Garden & Art Center, we welcome you on this wonderful journey where art and nature connect us – *and heals us.*



THANK YOU FOR YOUR SUPPORT!



FUN FACT

So far at Annmarie, we have identified four species of orchids that are native to Maryland, one of which requires a certain type of soil-born fungi to survive.